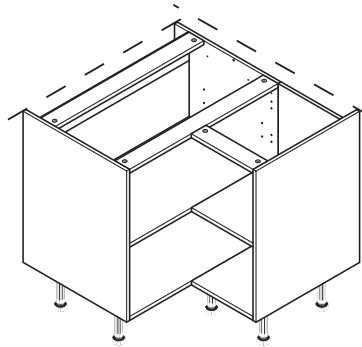
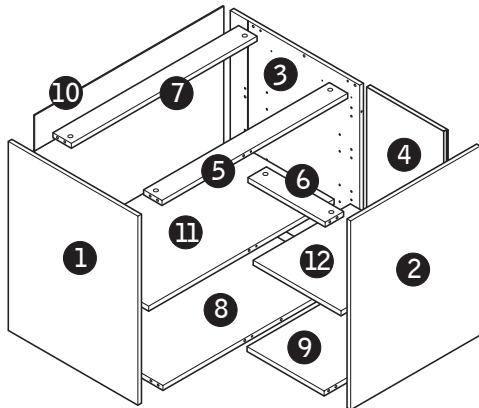


ASSEMBLY GUIDE



925 x 925mm
BASE
Corner Cabinet

Panels



- | | |
|-------------------------------|-------------------------------|
| 1 x 1 Left Side Panel | 1 x 7 Back Rail |
| 1 x 2 Right Side Panel | 1 x 8 Large Base Panel |
| 1 x 3 Rear End Panel | 1 x 9 Small Base Panel |
| 1 x 4 Solid Back Panel | 1 x 10 Back Panel |
| 1 x 5 Large Front Rail | 1 x 11 Large Shelf |
| 1 x 6 Small Front Rail | 1 x 12 Small Shelf |

Hardware

- | | |
|-------------------------|---------------|
| 18 x A | 20 x G |
| 16 x H 14mm Deep | 6 x E |
| 2 x I 12mm Deep | 5 x F |
| 63 x B 15mm | 2 x C |
| 2 x R 25mm | |
| 3 x J 55mm | |

Hinges (standard doors only)

- | | |
|--------------|--------------|
| 4 x D | 4 x M |
|--------------|--------------|

Legs

- | | | |
|--------------|--------------|--------------|
| 7 x O | 7 x Q | 3 x P |
| | | 3 x S |

Tools Required

- Cross Head Screwdriver
- Drill & Drill Bits
- PVA Wood Glue
- Pliers x 2
- Hammer
- Spirit Level

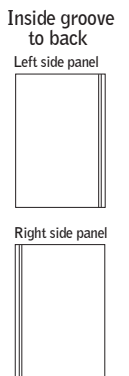
Before you start . . .

WARNING: Installation should be performed by a competent person only. This product could be dangerous if incorrectly installed. Check the pack and make sure all the components are included - if not, call the Manufacturers' Helpline on **01769 575500** and their team will get things sorted. When you are ready to start make sure you have the right tools to hand, plenty of space and a clean dry area for building. Don't rush, read the instructions first and run through the sequence before you begin. Assembly should be done in the stages shown in the following diagrams, constructing **one** unit at a time and keeping fittings together to avoid loss. Lay large panels on the floor using the packaging for protection. Do not over tighten screws.

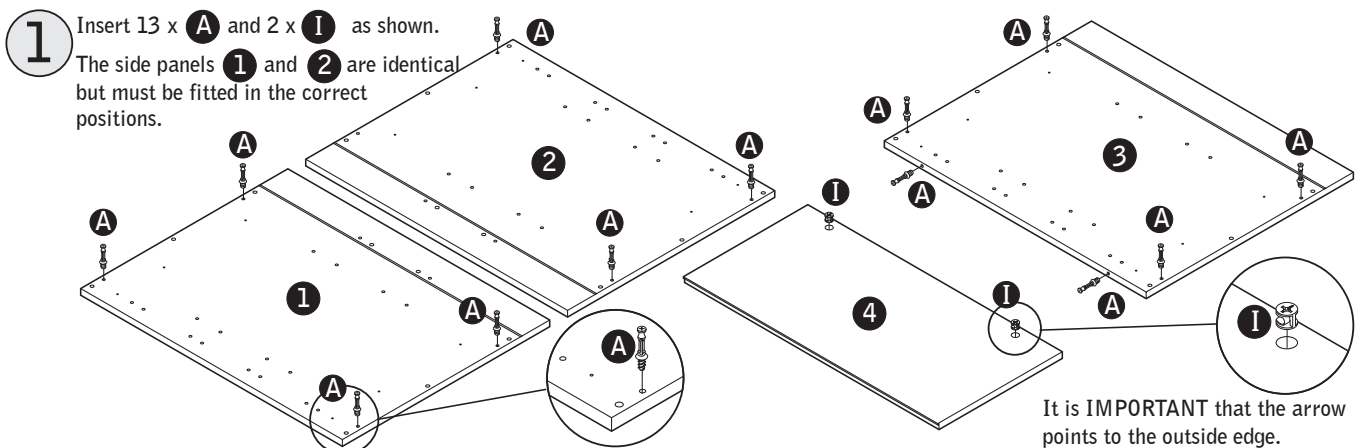
Cleaning - Use mild soap and water only. Do not use abrasive cleaners.

Video assembly guides can be viewed at www.mycabinetguide.co.uk

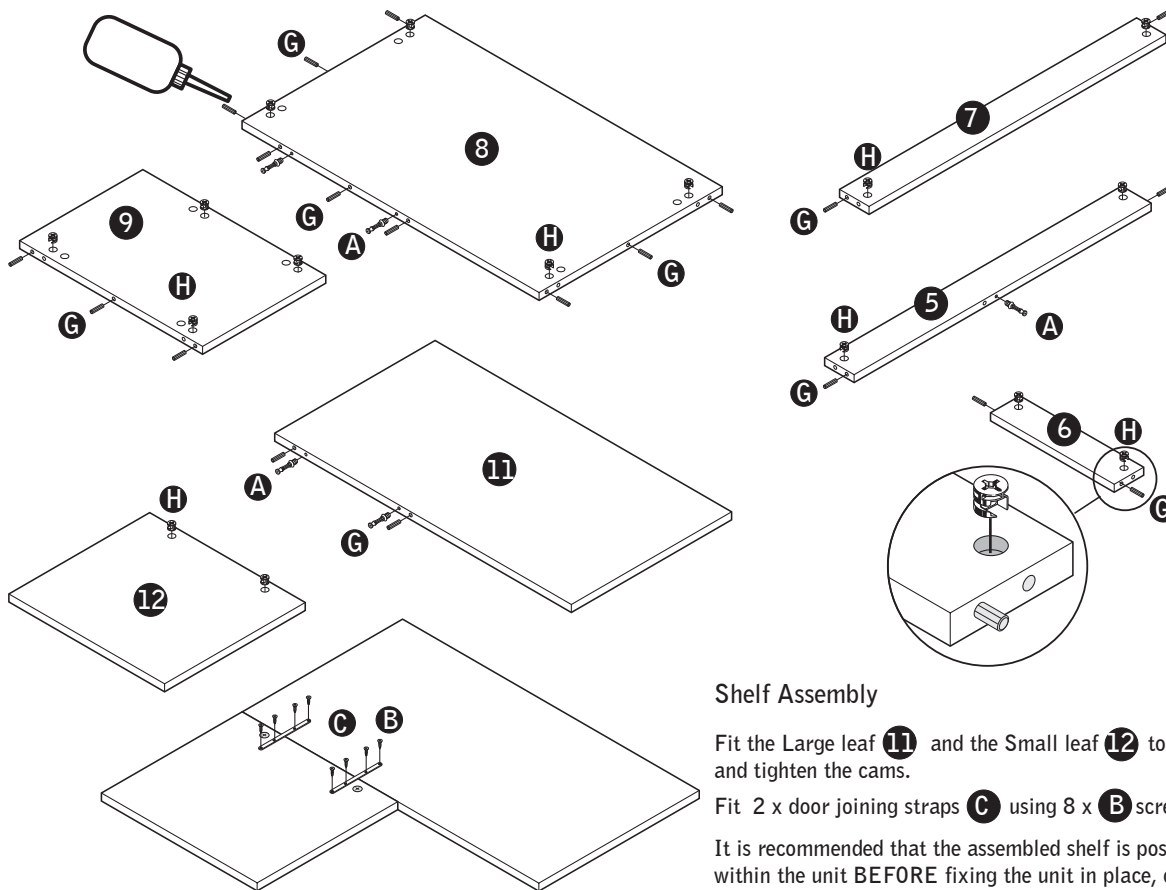
Note: If you are using a colour matched end panel and face panel, use these to replace the identically sized panels supplied within this pack.



Note: Please allow 927mm when planning to allow for any walls that are not completely square.



- 2** Insert 5 x **A** and 20 x **G** as shown. Apply a small droplet of glue to the hole before inserting **G**.
Fit 16 x **H**. It is important that the arrow points to the outside edge.



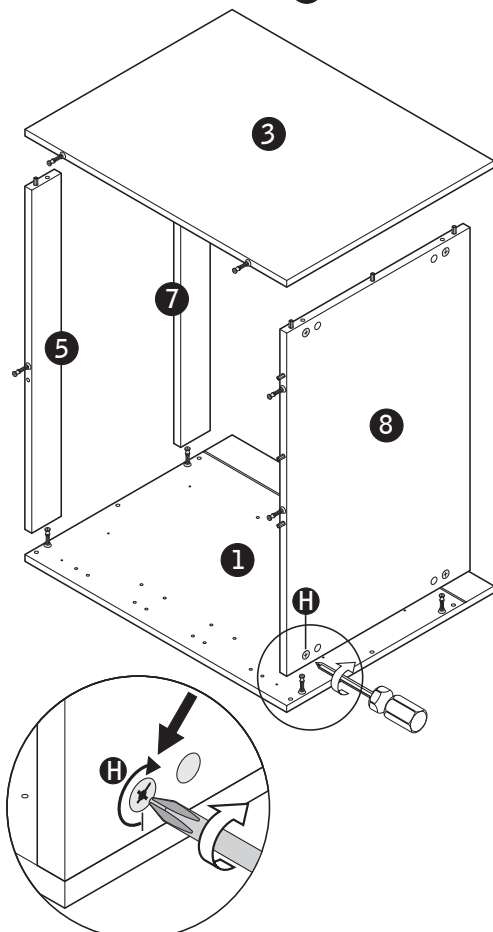
Shelf Assembly

Fit the Large leaf **11** and the Small leaf **12** together and tighten the cams.

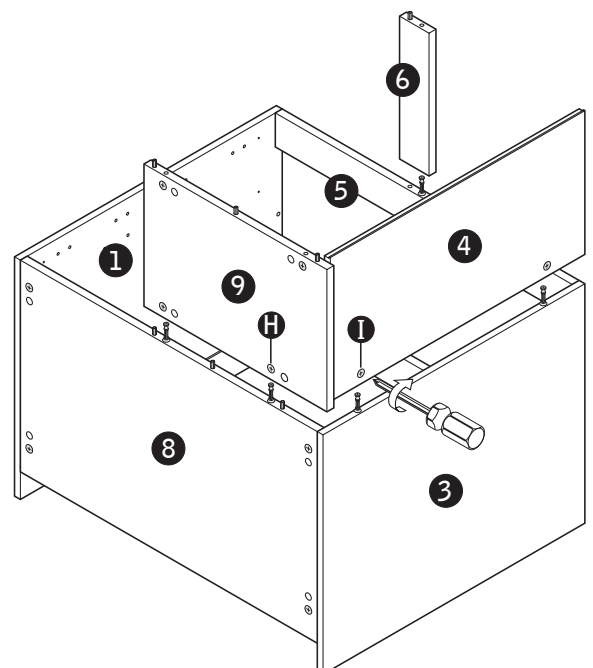
Fit 2 x door joining straps **C** using 8 x **B** screws.

It is recommended that the assembled shelf is positioned within the unit **BEFORE** fixing the unit in place, or fixing the work surface

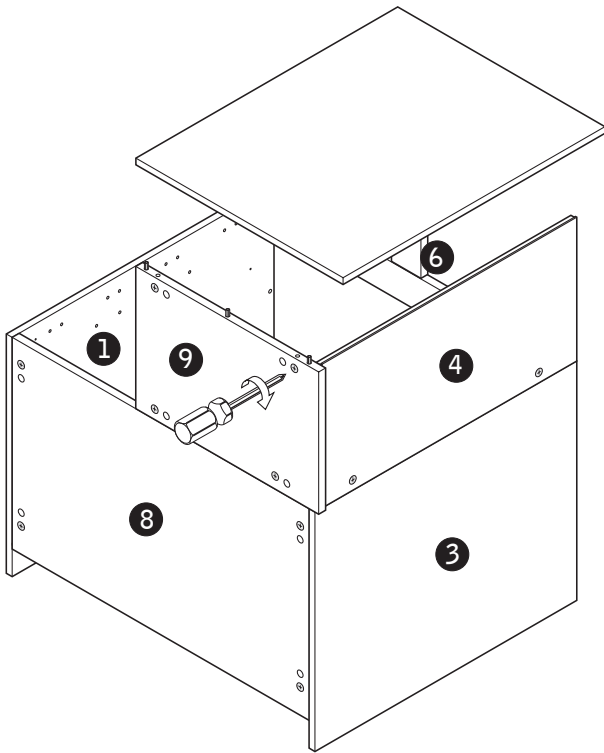
- 3** Connect the Large Base Panel **8**, the Large Front Rail **5** and the Back Rail **7** to the Side Panel **1**. Fit Rear End Panel **3**.
Tighten the 8 x Cams **H** clockwise as shown.



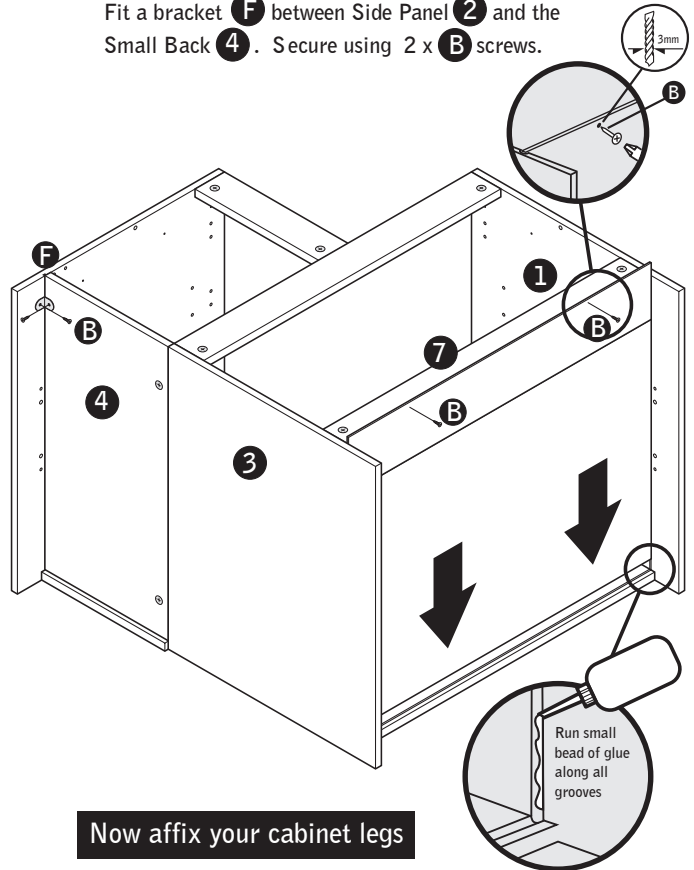
- 4** Connect the Small Base Panel **9** to the Large Base Panel **8**, the Small Front Rail **6** to the Large Front Rail **5**, and the Solid Back **4** to the Side panel **3**.
Tighten the 2 x Cams **H** and 2 x Cams **I** clockwise.



- 5** Connect the Side Panel **2** to the Small Base Panel **9**, the Small Front Rail **6** and the Solid Back **4**.
Tighten the 3 x Cams **H** clockwise.

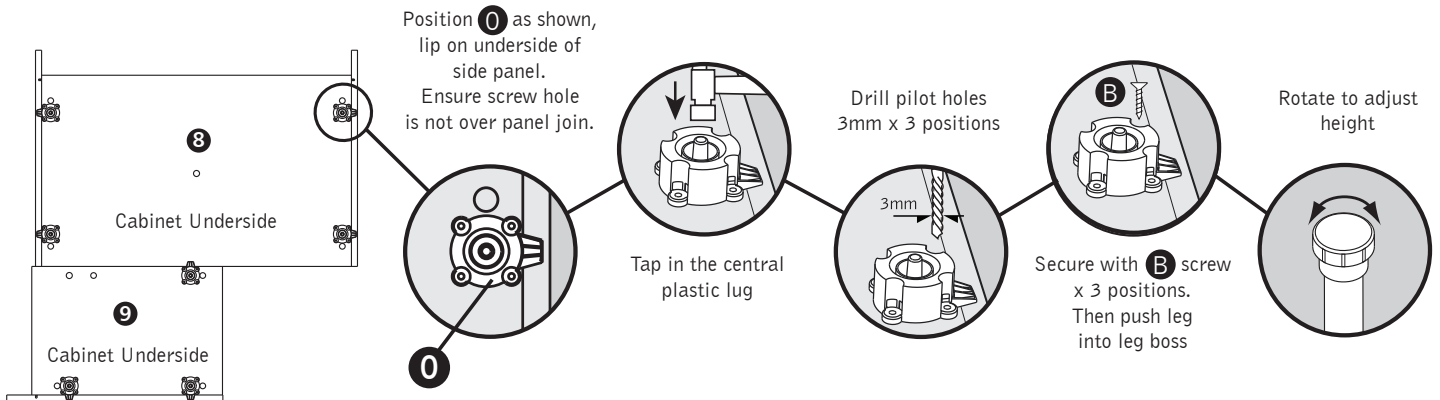


- 6** Slide the Back Panel **10** into the groove.
Carefully drill through **10** into the Back Rail **7**.
Secure using 2 x **B** screws.
Fit a bracket **F** between Side Panel **2** and the Small Back **4**. Secure using 2 x **B** screws.

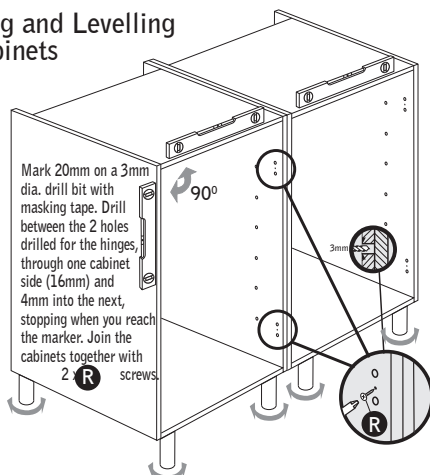


Now affix your cabinet legs

Fitting the Legs



Joining and Levelling of Cabinets

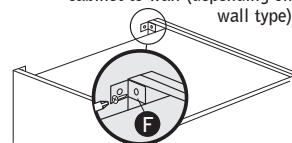


All legs are pre-set at 150mm height.
Rotate to adjust up and down, to level the unit.

Fitting to wall

Drill 3mm pilot hole.
Fix bracket **F** with **B** screw.

Use appropriate fittings to secure cabinet to wall (depending on wall type).



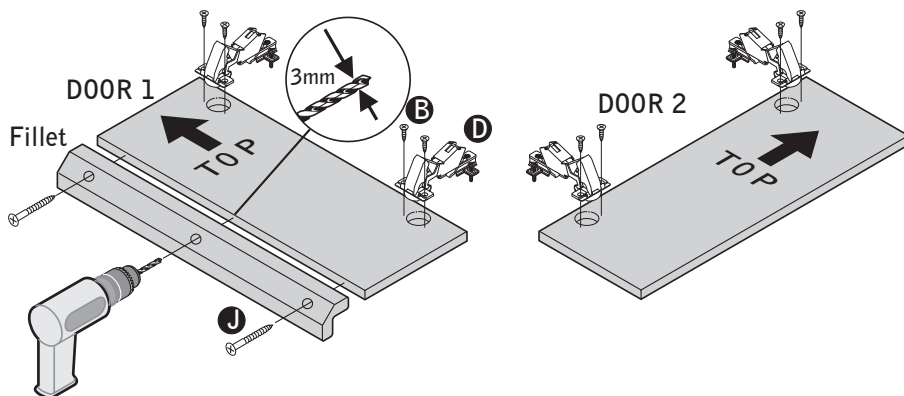
DOOR HINGES- HIGHLINE UNITS (standard doors only)

If you have chosen framed doors, refer to the instructions supplied in the separate hinge pack for frame fixing and fitting of hinges.

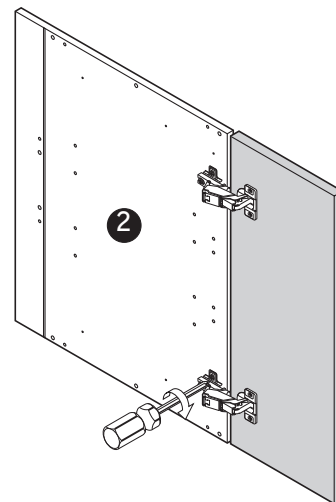
The doors and fillet are supplied separately. The fillet must be fitted to the opposite door to the handle or knob. Drill carefully into the edge of the door and fix the fillet with 3 x **J** screws.

Separate hinge from hinge plate if supplied attached.

Insert the door hinges into the recesses in the back of the door and fix with 8 x **B** screws.



Attach the door to the cabinet. The pre-fitted screws will align with the correct holes. Tighten the screws.



DOOR HINGES - DRAWERLINE UNITS (standard doors only)

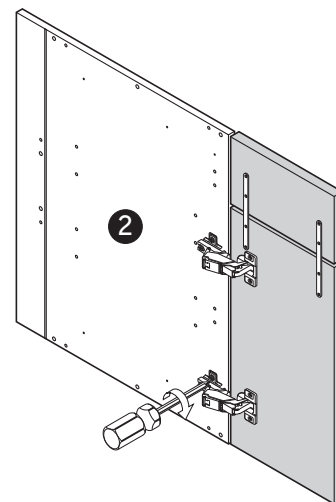
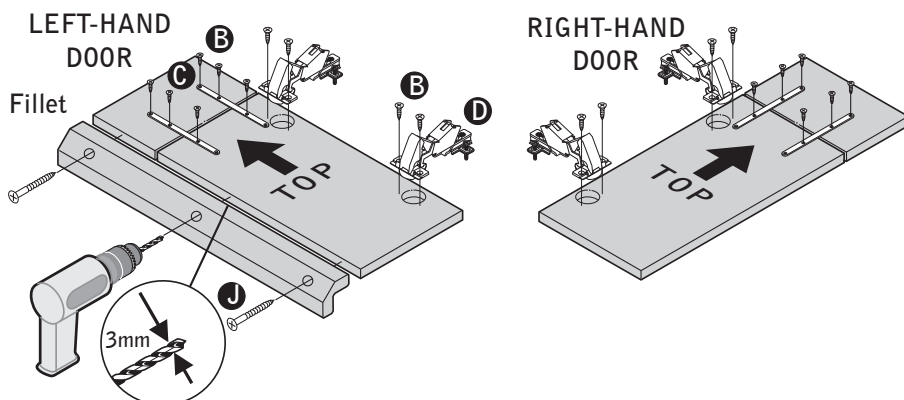
The doors and fillet are supplied separately. Fix the dummy drawer fascia to the door with the door joining straps **C** (purchased separately) using 16 x **B** screws. Leave a 3mm gap.

The fillet must be fitted to the Left-hand Door only. Do NOT fit a handle or knob to this door.

Drill carefully into the edge of the door and fix the fillet with 3 x **J** screws.

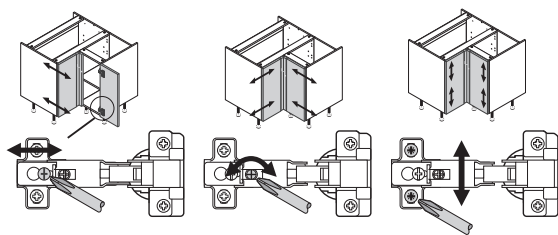
Separate hinge from hinge plate if supplied attached.

Insert the door hinges into the recesses in the back of the door and fix with 8 x **B** screws.



Door Hinge Adjustment (standard doors only)

If you have chosen framed doors, refer to the instructions supplied in the separate hinge pack for adjustment of hinges.



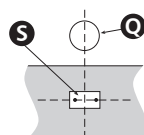
Turn screw as shown to adjust the door position.

To fit plinths

Lay plinth panel in front of cabinet. Position plinth clip plate **S** opposite front cabinet legs. Secure with 2 x screws **B**.

Slide **P** into **S**.

Stand plinth up.



To fit door handles

Position your choice of handle (available separately) using the drilling guide available in stores.

For standard doors, do not fit a knob or handle to the left hand door.

To fit shelves

Push shelf support **E** into chosen shelf position holes, 6 per shelf. Tilt and slide in shelf.

