

*** IMPORTANT INFORMATION ***

BEFORE YOU START

Installation should be performed by a competent person only. This product could be dangerous if incorrectly installed.

Check the pack to ensure all of the components are included.

When you are ready to start, make sure that you have all of the correct tools to hand, have plenty of space, and that the area for building is clean and dry.

Do not rush! Read these instructions first and run through the sequence before you begin. Assembly should be carried out in the steps shown in the following diagrams, constructing one unit at a time and keeping fittings together to avoid loss. Lay large panels on the floor using the packaging for protection. Do not overtighten screws, as this may damage the cabinet.

If any items are missing, or problems arise with fitting, please call the **Manufacturers' Helpline on 01769 575500**.

To clean - use mild soap and water only.

Do not use abrasive cleaners.

HARDWARE:

2 x **BR**
LH Drawer Runner

2 x **BS**
RH Drawer Runner

4 x **BF**

4 x **BG**

16 x **BE** Euro Screw

8 x **D** 15mm

Please use scissors to open the bag of fittings and then empty the contents into a bowl, so that they do not get lost!

HARDWARE FRAMES ONLY:

4 x **D** 15mm

4 x **BH**

MINIMUM TOOLS REQUIRED:

CROSS HEAD SCREWDRIVER

DRILL & DRILL BITS (3mm & 5mm)

TAPE MEASURE

DRAWER BOX:

These items are pre-assembled

2 x ① LH drawer side

2 x ② RH drawer side

2 x ③ LH rear back support

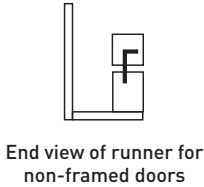
2 x ④ RH rear back support

2 x ⑤ Drawer base

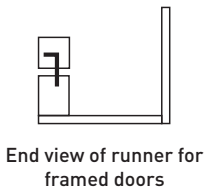
2 x ⑥ Drawer back

STEP 1:

A NON-FRAMED DRAWERS

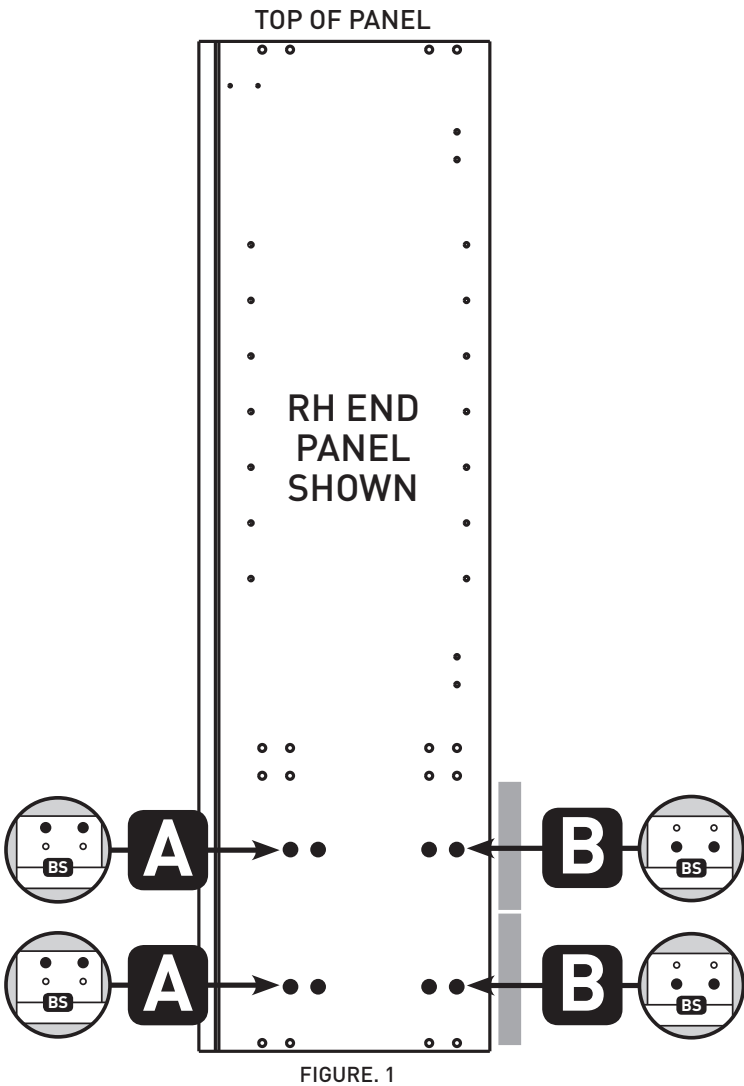
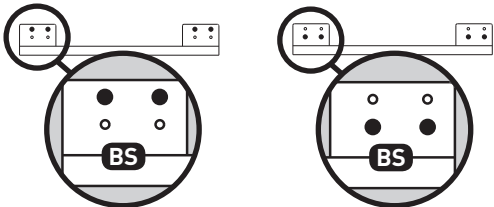


B FRAMED DRAWERS



BRACKET FIXING POSITIONS:

The highlighted hole positions for the brackets must be used, as detailed in Fig 1.



STEP 2:

Before fitting the drawer runners to the end panels, you will need to fully extend the runners, to confirm that you have a left and right hand pair.

Refer to Fig 1 for the correct fixing positions of the drawer system you have purchased.

Fix the RH runner, as shown, to the RH end panel, using 4 x **BE** screws, and then repeat for the LH runner on the LH end panel.

STEP 3:

Turn drawer upside down and ensure both white plastic forks are set to the factory default position as shown below.

Reset the forks if they have moved to the opposite position (this will require firm pressure).

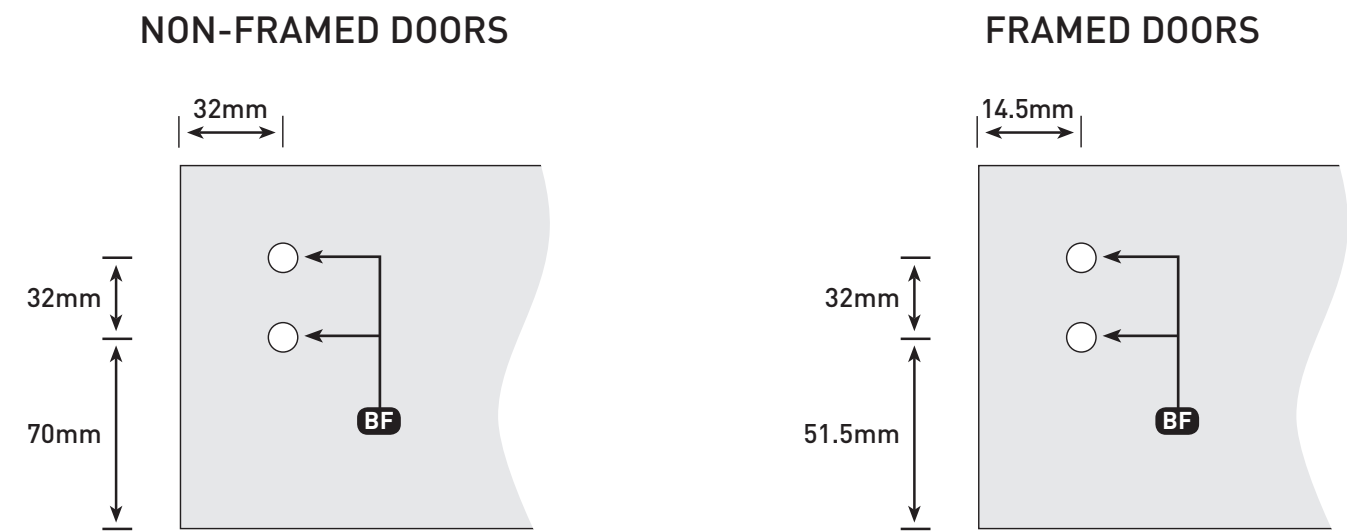
Turn the drawer the correct way up. Fully extend the drawer runners.

Sit drawer sides on top of the extended drawer runners. Push drawer into cabinet until it 'clicks' into position.

STEP 4:

Depending on the fascia range you have chosen the correct fixing positions may already be marked on the drawer fronts.

Some ranges are pre-marked with different positions. If necessary mark and drill four holes **8mm deep** at **3mm diameter** in reverse side of drawer front.



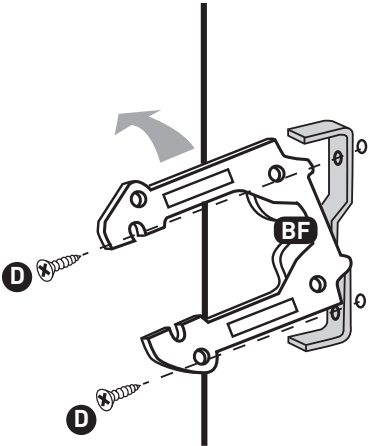
NOTE: Depending on the fascia range chosen you may have some unused pre-drilled holes on the reverse of the drawer front.

STEP 5:

Twist the plastic part of **BF** anticlockwise to reveal the holes (if the plastic and metal parts have become separated, simply join them back together).

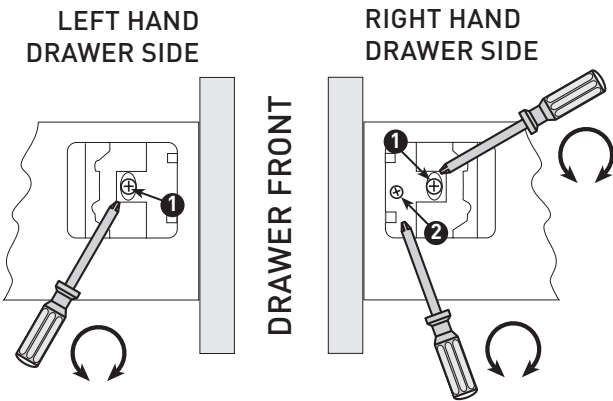
Position **BF** on the reverse side of the drawer front and secure using screws **D**.

Twist the plastic part of **BF** clockwise to lock into position.



STEP 6:

Push drawer front connectors into white plastic part of drawer box sides until it locks into position.



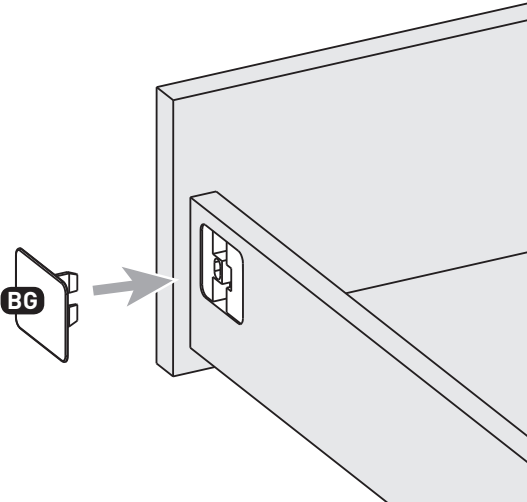
For **Vertical adjustment**, loosen screws **1** adjust Drawer front to desired position, re-tighten screws **1**.

For **Horizontal adjustment**, turn screw **2** clockwise or anticlockwise for required positioning.

NOTE: Screw **2** is only present in the RH drawer side.

STEP 7:

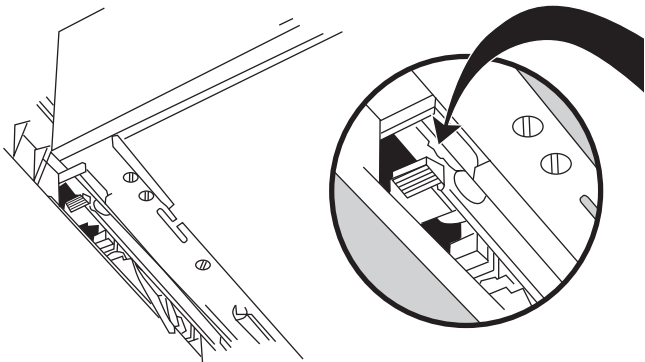
Once any adjustments have been made, the drawer front must be locked into place by fitting the locking plates **BG**, as shown.



STEP 8:

Fast assembly system for quick fixing or removal.

To remove drawers push up both black/grey tabs together (located underneath both sides of drawer near the front) while pulling out from carcass.



STEP 9:

FRAMED DRAWERS ONLY:

Fit drawer stops **BH** to the inside of the left and right hand sides of the frame, to achieve correct positioning of the drawer front, when closed.

