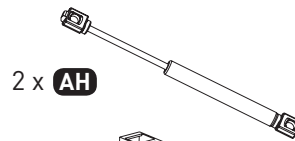
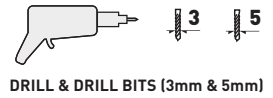


800MM BRIDGING CABINET
HARDWARE:1000MM BRIDGING CABINET
HARDWARE:ALL BRIDGING CABINET
HARDWARE:

MINIMUM TOOLS REQUIRED:

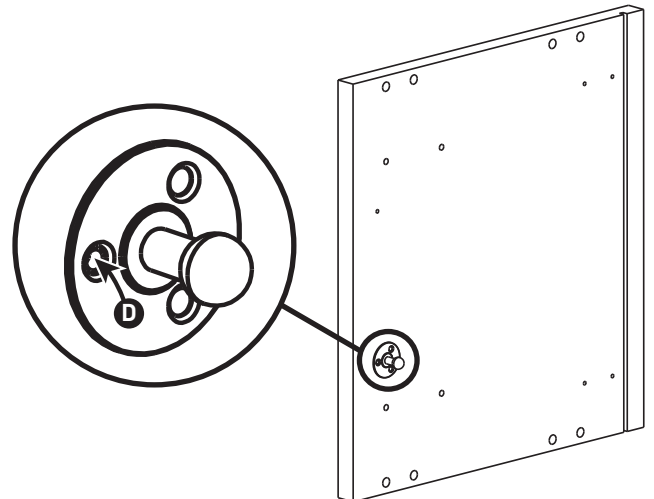


Please use scissors to open the bag of fittings and then empty the contents into a bowl, so that they do not get lost!

STEP 1:

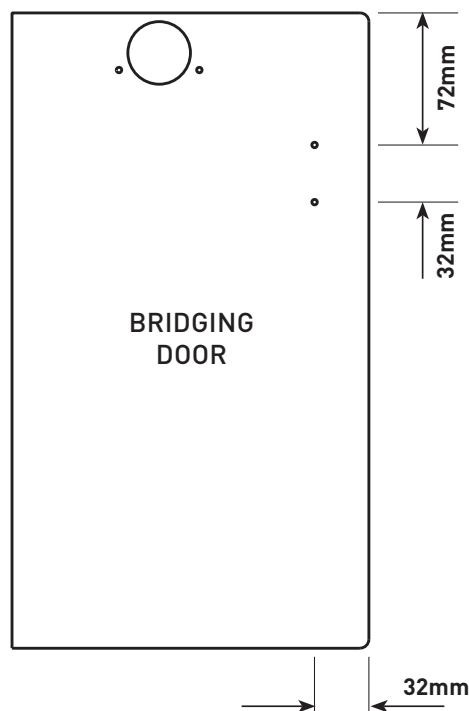
Fix bracket **AJ** to both end panels in the position shown, using the pre-marked holes, and secure in place using screws **D**.

Turn the brackets until the other two holes are in a vertical line, and then carefully drill pilot holes using a 3mm drill bit in the centre of these holes, and secure using screws **D**.



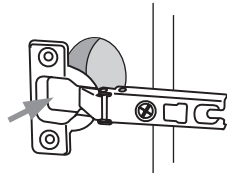
STEP 2:

Fit the door fixing plate **AK** to both ends of the door, in the pre-marked positions, using screws **R**.

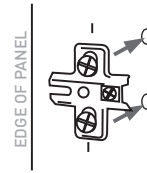


STEP 3:

Separate hinge from hinge plate if supplied attached.

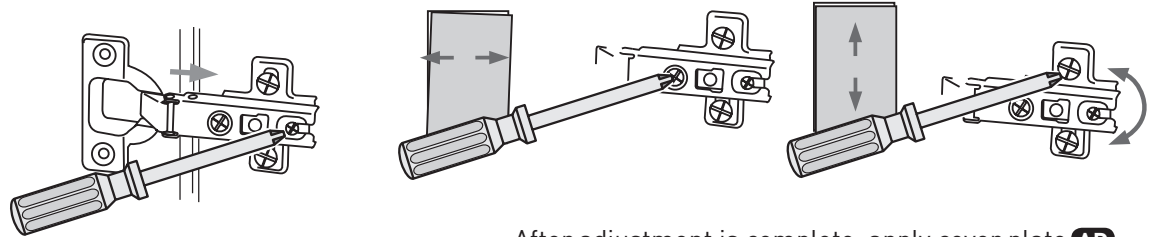


Insert door hinge **AB** into recess in door and affix using 2 x **D** screws.



Affix hinge plate **AC** to cabinet using pre-drilled holes with pre-mounted screws

Turn screw as shown, to adjust the door position



After adjustment is complete, apply cover plate **AD**.

STEP 4:

Once the door has been fitted to the cabinet, the bridging stay piston can be fitted. Attach the gas piston **AH** to the cabinet fixing plate **AJ** and the door fixing plate **AK**, so that the main body of the piston is at the top.

Removing the piston: Carefully push a small flat bladed screwdriver under the steel band at the top and bottom of the piston, and pull this band out to release.

STEP 5:

Fit the smove mounting block **AE** to the end panels of your cabinet, using 2 x screws **D**, checking that the lip is sitting over the front edge of the panel. Insert the smove piston **AF**, and fit the cover **AD** to complete.

