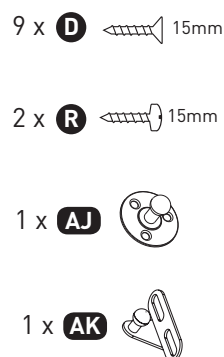
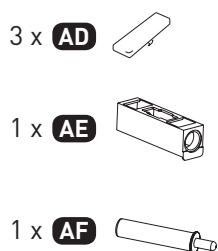
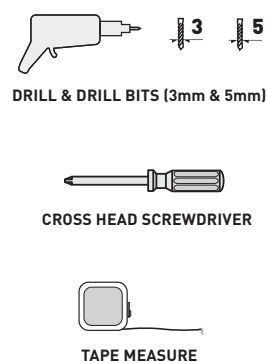


Please use scissors to open the bag of fittings and then empty the contents into a bowl, so that they do not get lost!

HARDWARE:



MINIMUM TOOLS REQUIRED:

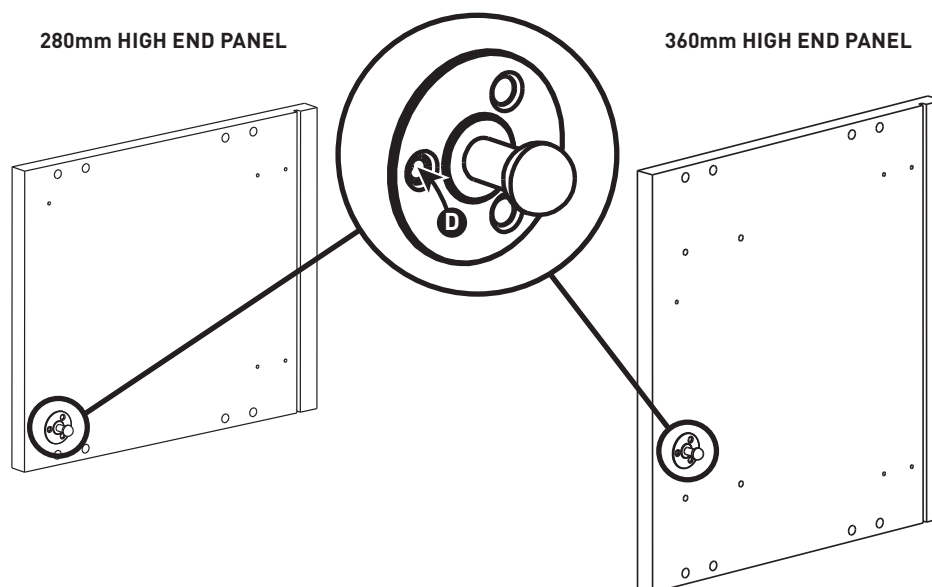


These instructions show how to fit the bridging stay to the LH side of your cabinet.
If you require the stay on the RH side, then you should mirror the end panel details.

STEP 1:

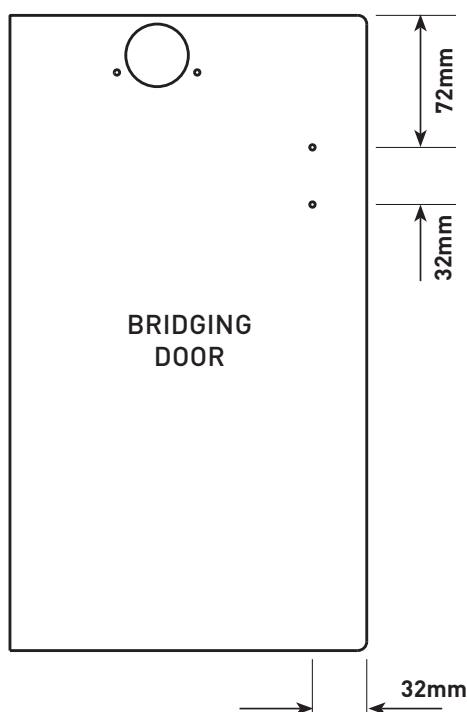
Fix bracket **AJ** to the LH end panel, in the position shown, using the pre-marked hole, and secure using screw **D**.

Turn the bracket until the other two holes are in a vertical line, and then carefully drill pilot holes using a 3mm drill bit in the centre of these two holes, and secure using screws **D**.



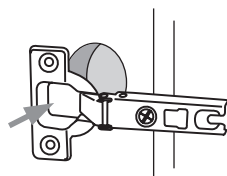
STEP 2:

Fit the door fixing plate **AK** to the door, in the pre-marked position, using screws **R**.

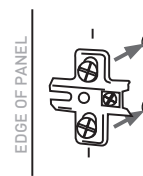


STEP 3:

Separate hinge from hinge plate if supplied attached.

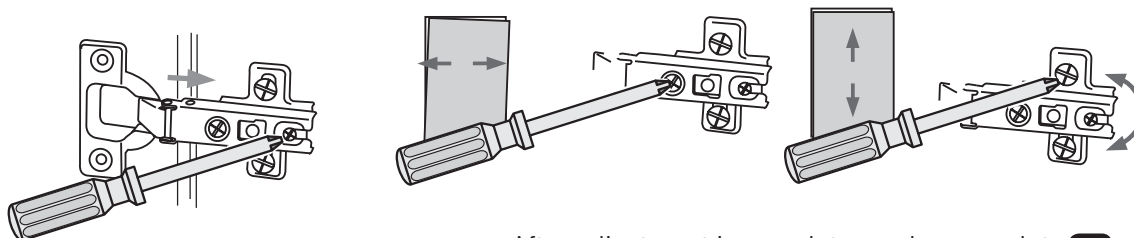


Insert door hinge **AB** into recess in door and affix using 2 x **D** screws.



Affix hinge plate **AC** to cabinet using pre-drilled holes with pre-mounted screws

Turn screw as shown, to adjust the door position



After adjustment is complete, apply cover plate **AD**.

STEP 4:

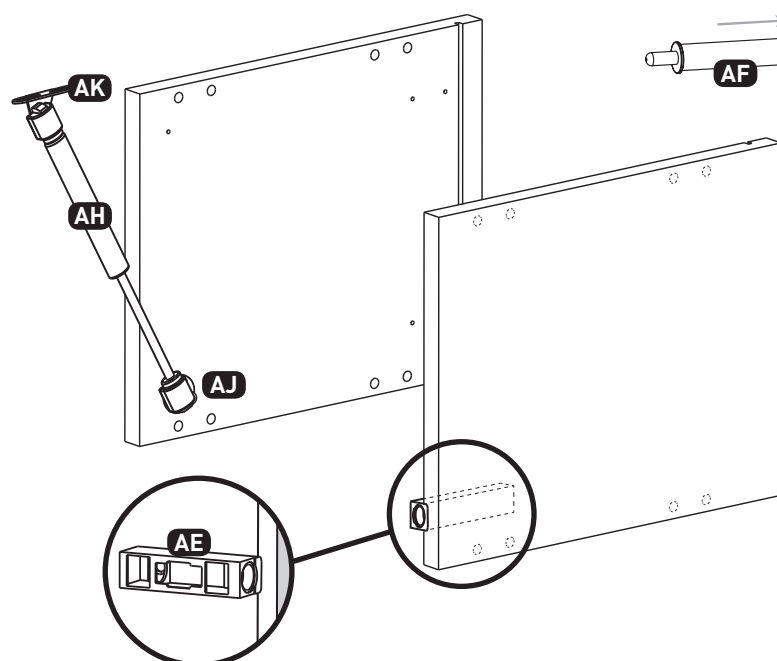
Once the door has been fitted to the cabinet, the bridging stay piston can be fitted. Attach the gas piston **AH** to the cabinet fixing plate **AJ** and the door fixing plate **AK**, so that the main body of the piston is at the top.

Removing the piston: Carefully push a small flat bladed screwdriver under the steel band at the top and bottom of the piston, and pull this band out to release.

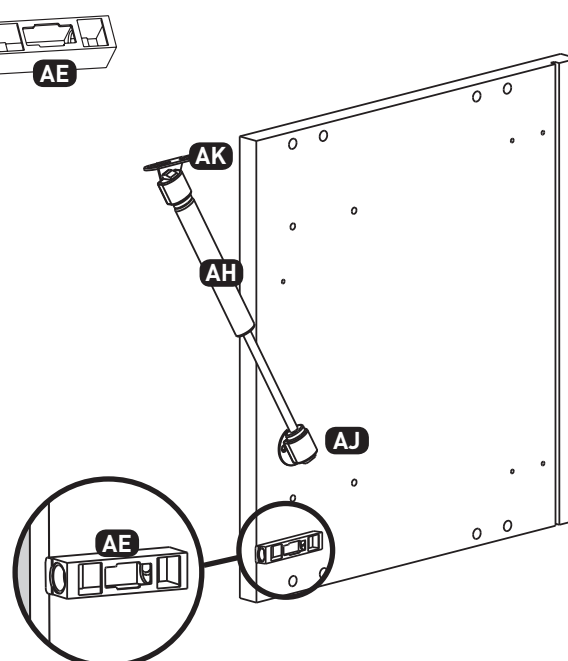
STEP 5:

Fit the smove mounting block **AE** to the base panel of your cabinet, using 2 x screws **D**, checking that the lip is sitting over the front edge of the panel. Insert the smove piston **AF**, and fit the cover **AD** to complete.

280mm HIGH END PANEL



360mm HIGH END PANEL



These instruction show how to fit the bridging stay to the LH side of your cabinet.
If you require the stay on the RH side, then you should mirror the end panel details.